



PRODUCTS Temperature Compensated Voltage Controlled Crystal Oscillator (SMD)

Typical Applications:

- Mobile Phone
- Wireless LAN
- Bluetooth
- GPS

TV2A (SMD TC-VCXO Series)

Part Number: TV20 (waveform) (ppm) -Temp - Pull - Freq

Example: TV2AS2.5-3080-9-26.000

■ Specification

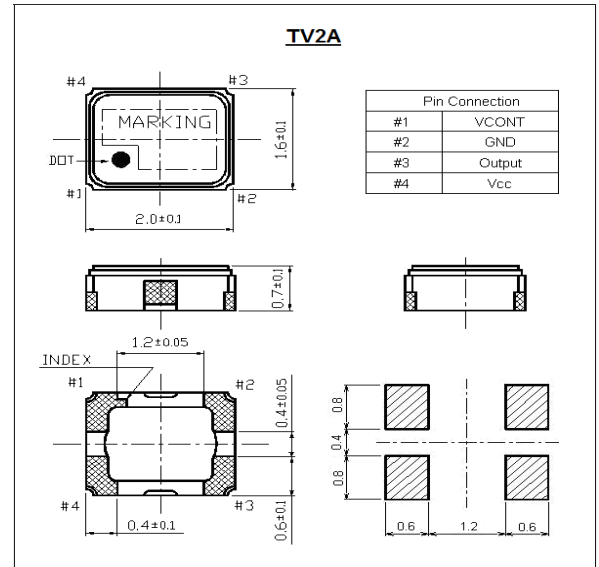
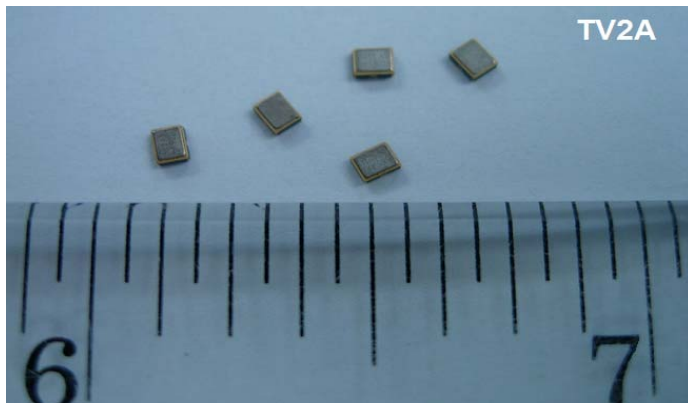
TV2A

Part No.	Example
TV2A (ppm)-Temp Range-Pull-Freq	TV2A2.5-3080-9-26.000

Specification	TV2A	
Frequency Range	13.0 to 26.0MHz	
Temperature Stability	vs Temperature	±2.5ppm Max. (-30°C to +80°C)
	vs Power Supply	±0.2ppm Max. (Vcc ± 0.1V)
	vs Load	±0.2ppm Max. (10KΩ//10pF)
Operating Temperature Range	-30°C to +80°C	
Aging	±1.0ppm/year Max.	
Supply Voltage (Vcc)	+2.4 to +2.8V ± 0.1V	
Current Consumption	1.5mA Max.	
Output Load	10KΩ//10pF	
Output Voltage	0.8V (P-P) Min. (DC Coupling)	
Pullability	±9.0 to ±15.0ppm	
Control Voltage Range	+0.4 to +2.4V DC	

■ Dimension

(Unit: mm)



OSCILLATOR